

# FOOD SECURITY IN A CHANGING CLIMATE

## Adapting our farming system to a changing climate in Lesotho

Sustainable agriculture implies producing our own food today without compromising our children's ability to produce even much more in the future.  
 If we do not protect our natural resources, one day soon we may not be able to sustain our livelihoods and our children's future.  
 If this happens, our children will never forgive us.

### Sustainable Farming

200kg 200kg 200kg 200kg 200kg

In the past: granary 1 ton.

50kg 50kg

Current Farmer: bags of maize.

Current Farmers' Children: ?

Are we farming sustainably?

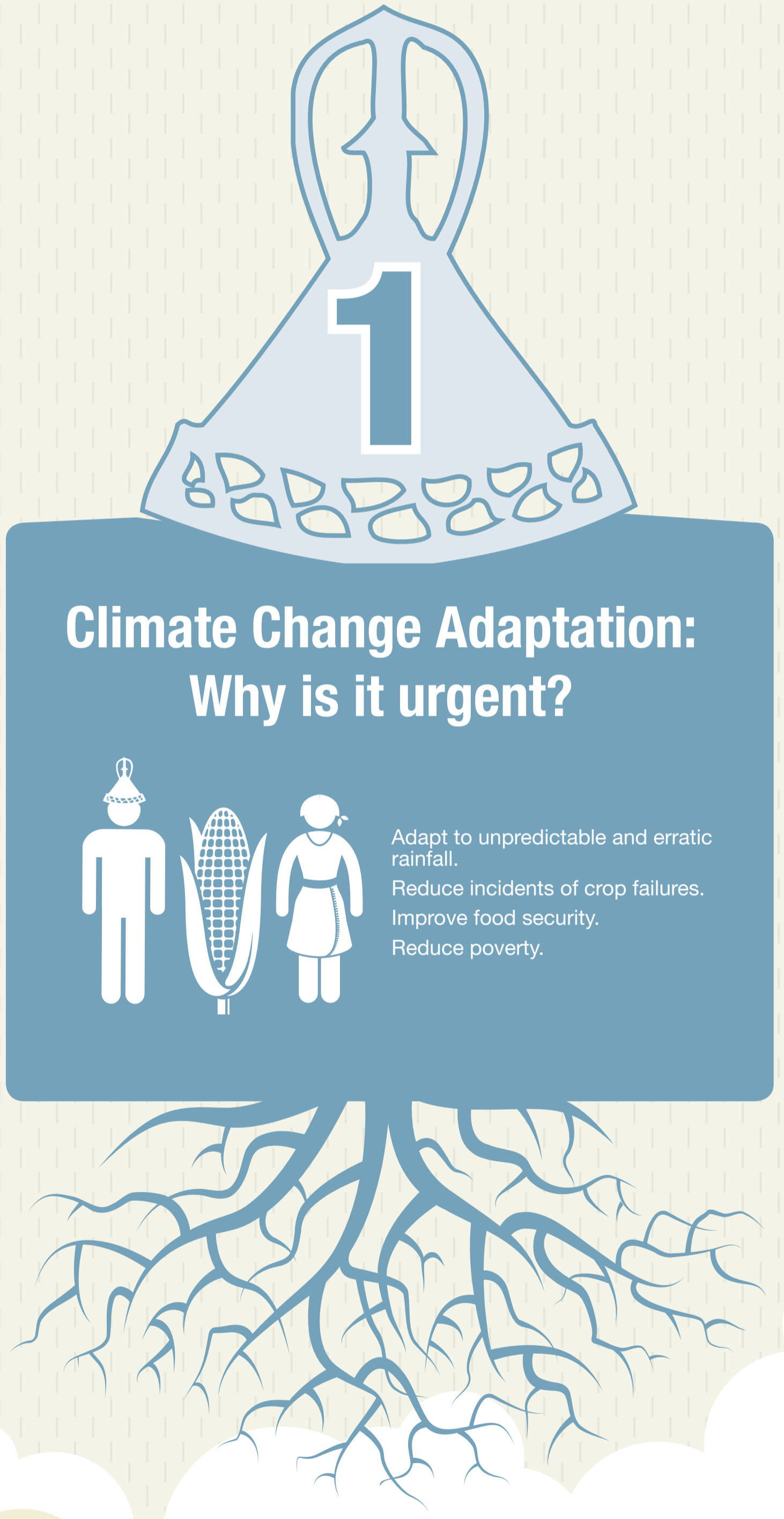
### Climate Change Consequences

Weather has become more unpredictable, less regular

Extreme temperatures. Intense drought. Frequent flooding. Delay of first rains. Greater impact of frost.

### How do we adapt to Climate Change?

Conservation Agriculture (e.g. Likoti). Homestead vegetable cultivation (e.g. Key-hole gardening). Match planting times with the choice of your crops, to coincide with first rains. Install water-harvesting tanks and drip irrigation systems. Crop diversification.



### Conservation Agriculture & Climate Change Adaptation

Conservation Agriculture (CA) is one of the best adaptation techniques in Lesotho context and it is accessible to all. The principles of CA are:

- 1) minimum soil disturbance
- 2) permanent soil cover: crop residue or live mulch
- 3) crop rotation and/or intercropping.

We need to change our current practices so we can produce more quantity and quality food while improving the soil in our fields.

### Conventional Tillage

Increased erosion of the fields and low yields with higher costs:

### Conservation Agriculture

manual mechanical

Improves the soil condition and the production gets better and better, year after year, with lower costs:

WHY?

WHY NOT?

### What is the future for our children?

Food Insecurity

Food Security

**The time has come for adapting to climate change.**

We must protect the environment that feeds us! We must protect our families!  
 While we have produced food crops through conventional tillage for many years, this has come at great cost to our environment and soil productivity with negative impact on our households' food security.  
 Conservation Agriculture offers us the best opportunity for climate change adaptation.



These materials have been commissioned by FAO Lesotho and the Ministry of Agriculture and Food Security with financial support from the European Commission Humanitarian Aid and Civil Protection Directorate (ECHO) and OFDA in 2012. These materials were developed in coordination with, and endorsed by, the Lesotho Conservation Agriculture National Task Force (LCANTF). These materials can be freely reproduced for non-commercial purposes ensuring attribution to the LCANTF and FAO. Any derivative work must be approved by FAO and the LCANTF. The members of LCANTF are the following: Apostolic Faith Mission, CARE Lesotho, Catholic Relief Services (CRS), FAO - Food and Agriculture Organization, Growing Nations, Lesotho Agricultural College, Lesotho College of Education, Lesotho Red Cross Society, Ministry of Agriculture and Food Security, Ministry of Forestry and Land Reclamation, National University of Lesotho (NUL), Rehobotho Church, Rural Self Help Development Association (RSDA), Seeds and Markets Project (SAMP), World Food Programme, World Vision Lesotho.

